



ARIA ESSENTIALS

INTERDISCIPLINARY PERSPECTIVES



ARIA Quick Reference: Assessments and Protocols

Standard Reporting and Protocols for ARIA

TECHNIQUE: Blood Sensitive Sequence: [<SWI>][<GRE/T2*>] Field Strength: [<3 T>][<1.5 T>]

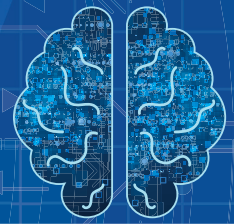
Category	Details
Findings	
Total microhemorrhages	Total number Describe locations in general, deep vs lobar
Superficial siderosis	None / < 1 focal area / < 2 focal areas / > 2 focal areas Describe locations
Extent of white matter hyperintensities	Mild, moderate, severe
Infarcts	Describe cortical and subcortical infarcts if present
Other findings	General description of other acute or chronic findings
Impression	
Total microhemorrhages	0-4 / 5-9 / ≥ 10
Superficial siderosis	Not detected vs present
Other findings	General description of other findings





ARIA ESSENTIALS

INTERDISCIPLINARY PERSPECTIVES



ARIA Quick Reference: Assessments and Protocols

ARIA Assessment

ARIA Type	Radiographic Severity		
	Mild	Moderate	Severe
ARIA-E	FLAIR hyperintensity confined to sulcus and/or cortex/subcortical white matter in 1 location < 5 cm	FLAIR hyperintensity 5-10 cm, or more than 1 site of involvement, each measuring < 10 cm	FLAIR hyperintensity measuring > 10 cm, often with significant subcortical white matter and/or sulcal involvement; ≥ 1 separate sites of involvement
ARIA-H microhemorrhage	≤ 4 new incident microhemorrhages	5-9 new incident microhemorrhages	≥ 10 new incident microhemorrhages
ARIA-H superficial siderosis	1 focal area of superficial siderosis	2 focal areas of superficial siderosis	> 2 focal areas of superficial siderosis

ARIA Severity

Clinical Symptom Severity	ARIA-E Severity			ARIA-H Severity		
	Mild	Moderate	Severe	Mild	Moderate	Severe
Asymptomatic	C	S	D	C	S	D
Mild	S	S	D	S	S	D
Moderate	S	S	D	S	S	D
Severe	D	D	D	D	D	D

C	Continue dosing
S	Suspend dosing until resolution of ARIA-E and stabilization of ARIA-H, resumption of dosing based on patient-specific risk-benefit assessment
D	Discontinue dosing due to serious symptoms

References and Abbreviations

ARIA, amyloid-related imaging abnormalities; ARIA-E, amyloid-related imaging abnormalities-edema; ARIA-H, amyloid-related imaging abnormalities-hemorrhage; FLAIR, fluid-attenuated-inversion recovery; GRE, gradient echo; SWI, susceptibility-weighted imaging.

1. Haller S et al. *Radiology*. 2024;310(2):e233381. 2. Cogswell PM et al. *AJNR Am J Neuroradiol*. 2022;43(9):E19-E35. 3. Lecanemab. Prescribing information. Eisai Inc.; 2025. 4. Donanemab. Prescribing information. Eli Lilly and Company; 2024. 5. Cummings J et al. *J Prev Alzheimers Dis*. 2023;10(3):362-377.

