



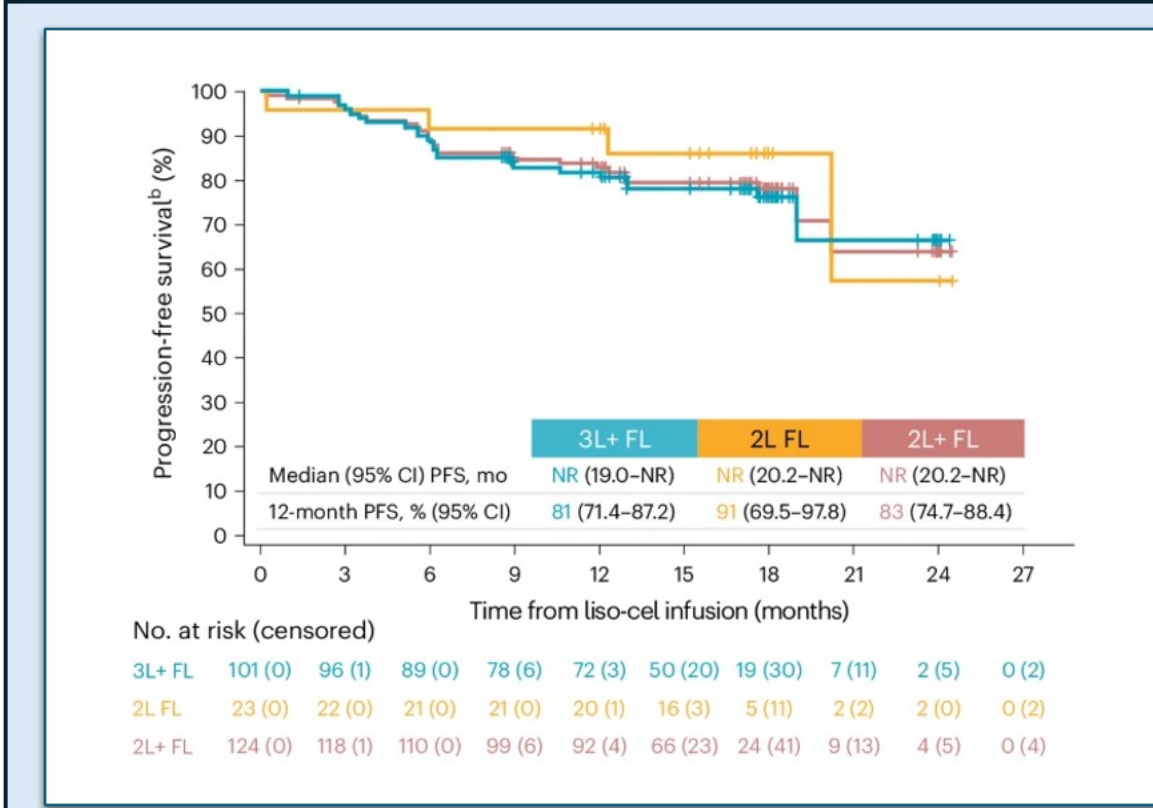
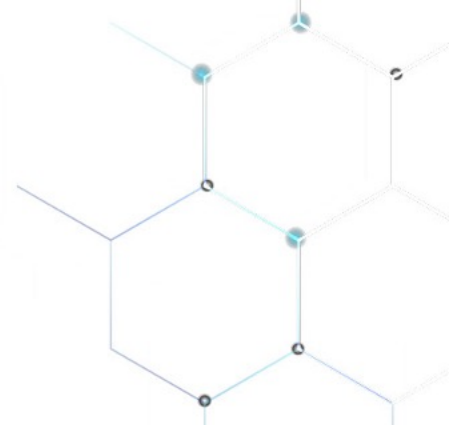
# Safety of TRANSCEND NHL 001, study of lisocabtagene maraleucel in patients with R/R MCL (n=88)

	Overall population	Prior LOT ≥ 2	Prior LOT 3-4	Prior LOT ≥ 5	Refractory to BTKi	Not refractory to BTKi
<b>Safety</b>	<b>88</b>	<b>85</b>	<b>31</b>	<b>26</b>	<b>47</b>	<b>36</b>
<b>CRS</b>						
<b>Grade 1-2</b>	<b>53 (60)</b>	<b>52 (61)</b>	<b>20 (65)</b>	<b>18 (69)</b>	<b>30 (64)</b>	<b>20 (56)</b>
<b>Grade 3-4</b>	<b>1 (1)</b>	<b>1 (1)</b>	<b>1 (3)</b>	<b>0</b>	<b>0</b>	<b>1 (3)</b>
<b>NE</b>						
<b>Grade 1-2</b>	<b>19 (22)</b>	<b>19 (22)</b>	<b>7 (23)</b>	<b>5 (19)</b>	<b>12 (26)</b>	<b>6 (17)</b>
<b>Grade 3-4</b>	<b>8 (9)</b>	<b>7 (8)</b>	<b>3 (10)</b>	<b>2 (8)</b>	<b>5 (11)</b>	<b>2 (6)</b>



# Lisocabtagene maraleucel

## Efficacy of TRANSCEND FL, phase 2 study of liso-cel in patients with R/R FL (n=139)



ORR by best overall response per IRC assessment (efficacy set) n (%)			
	3L + FL (n=101)	2L FL (n=23)	2L + FL (n=124)
ORR	98 (97)	22 (96)	120 (97)
CR	95 (94)	22 (96)	117 (94)
PR	3 (3)	0	3 (2)
SD	1 (1)	0	1 (1)
PD	1 (1)	1 (4)	2 (2)
NE	1 (1)	0	1 (1)

\*TEAE period was defined as the time from initiation of liso-cel administration through and including study day 90. Morschhauser F, et al. Nat Med. 2024 Jun 3.





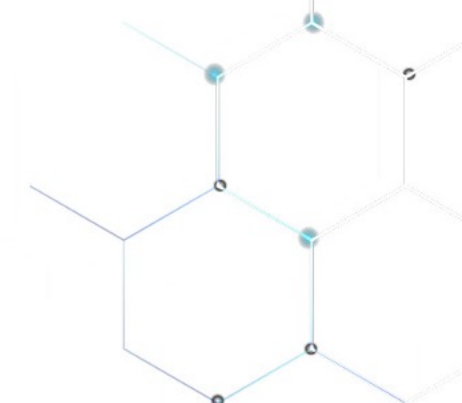
# Safety of TRANSCEND FL, phase 2 study of liso-cel in patients with R/R FL (n=139)

Most common TEAEs* ( $\geq 10\%$ ) in patients with 2L+ FL (liso-cel-treated set)	2L +FL (n = 130) n (%)	
	Any Grade	Grade $\geq 3$
Neutropenia	85 (65)	76 (58)
CRS	75 (58)	1 (1)
Anemia	49 (38)	13 (10)
Headache	38 (29)	0
Thrombocytopenia	33 (25)	13 (10)
Constipation	26 (20)	0
Pyrexia	23 (18)	0
Diarrhea	22 (17)	0
Lymphopenia	20 (15)	17 (13)
Fatigue	19 (15)	0
Tremor	18 (14)	0
Leukopenia	18 (14)	15 (12)
Asthenia	16 (12)	0



# Lisocabtagene maraleucel

Efficacy of TRANSCEND NHL 001, study of liso-cel in patients with R/R MCL (n=88)



	Overall population	Prior LOT ≥ 2	Prior LOT 3-4	Prior LOT ≥ 5	Refractory to BTKi	Not refractory to BTKi
Efficacy	83	81	29	26	45	35
ORR	69 (83)	67 (83)	25 (86)	21 (81)	34 (76)	32 (91)
CRR	60 (72)	58 (72)	21 (72)	17 (65)	29 (64)	28 (80)
DOR	15.7 (6.2-24.0)	14.5 (5.7-NR)	17.5 (3.3-NR)	6.7 (2.4-15.8)	5.3 (2.3-15.8)	24.0 (7.6-NR)
PFS	15.3 (6.6-24.9)	12.3 (6,5-NR)	16.6 (2.6-NR)	7.4 (3.3-12.3)	6.1 (3.1-16.5)	36.3 (15.3-NR)
OS	18.2 (12.9-36.3)	17.1 (11.1-36.3)	18.4 (6.7-NR)	13.5 (9.3-17.1)	11.1 (6.1-17.1)	36.3 (15.3-NR)

BTK, Bruton's tyrosine kinase; CI, confidence interval; CR, complete response rate; DOR, duration of response; LOT, line of therapy; MCL, mantle cell lymphoma; NR, not reached; OS, overall response; PFS, progression-free survival; R/R relapsed/refractory. Palomba ML et al., JCO 42, 7016-7016(2024).

